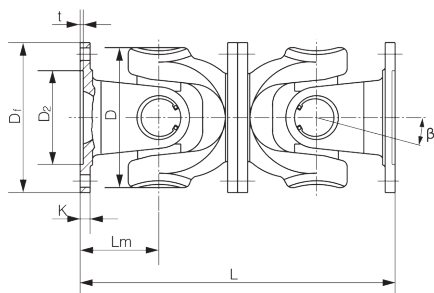
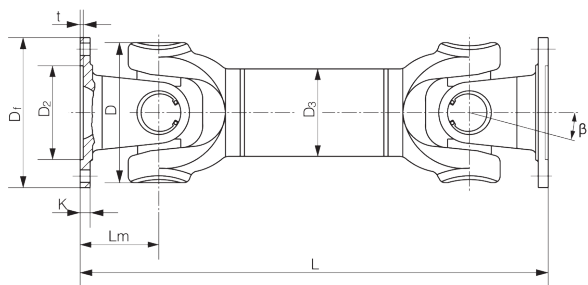
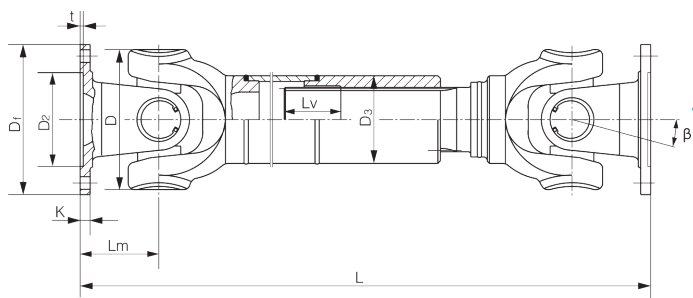






DESIGNS





TIPO - TYPE:



A

-  TIPO SALDATO, CON ALLUNGAMENTO
-  WELDED SHAFT DESIGN, WITH LENGTH COMPENSATION


B


-  TIPO SALDATO, SENZA ALLUNGAMENTO
-  WELDED SHAFT DESIGN, WITHOUT LENGTH COMPENSATION

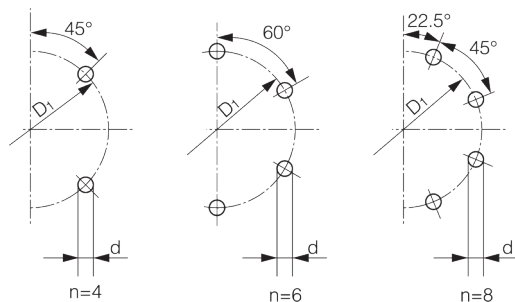
C

-  GIUNTO CARDANICO, SENZA ALLUNGAMENTO
-  SHORT FLANGED DESIGN, WITHOUT LENGTH COMPENSATION

CARATTERISTICHE FLANGE
FLANGE BOLTHOLE AND DESIGN PATTERNS

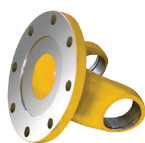
 Sono disponibili anche flange con fori per spine di fissaggio a norme DIN15452.
Sono disponibili anche flange SAE.
Su richiesta sono disponibili flange a mozzo o con attacco rapido.

 There are available also flanges with dowel pin connection according to norms DIN15452.
SAE flanges available.
On demand hub or fast connections available.



BHC

Flangia con connessione a centraggio



Bolt Hole Connection

PKC

IKC

Flangia con chiave parziale
Flangia con chiave intera



Partial face Key Connection
Integral face Key Connection

DATA AND SIZES																									
TYPE	DATA		DESIGN		XA 58		XA 65		XA 75		XA 90				XA 100				XA 120						
	ITEM																								
	L min.	255	165	285	165	335	200	285	182	226	366	445	226	296	261	366	242	500	211	294	237	261	242	286	376
	Lv	35	15	40	15	40	30	45	30	25	100	55	25	50	5	100	15	80	25	50	5	5	15	15	70
	Tn (Nm)	180	260	240	260	500	560	800	560	860	1800	1200	860	1100	1800	2700	2300	860	1100	1800	2700	3300	5200		
	Tf (Nm)	90	180	120	180	250	280	400	280	430	900	600	430	550	900	1350	1150	430	550	900	1350	1650	2600		
	β (°)	35	29	35	29	35	25	35	20	28	28	35	28	25	28	30	35	28	25	18	28	30	28	25	
	D	52	59	63	59	72	77	92	77	90	90	100	90	100	122	90	98	112	90	100	122	98	136	138	
	Dr	DIN58		DIN65		DIN75		DIN90				DIN100				DIN120									
	D1	47		52		62		74.5				84				101.5									
	D2	30H7		35H7		42H7		47H7				57H7				75H7									
	D3xδ min.	38x1.5	35x3	45x1.5	51x2.5	51x2.5		63.5x2.5	51x2.5	60x2.5		76x2.5	51x2.5	51x2.5	76.2x2.4	60x2.5		89x2.5	60x2.5	60x2.5	90x4	75x3	90x4		
	Lm	32	37	39	37	45	42	52	33	50.5		55	50.5	53	68	50.5	54	63	43	53	56	68	54	72	73
	K	3.5	4	4.5	4	5.5		6	6.5	7		8	7		8	7		8			8.5		8		
	t	1.5	2	1.7	2.8	2		2.5		2.8		2.5				2.6		2.5	2.7	2.5		3	2.6	3.1	2.8
	n	4		4		6	4	6		4				6				8							
	d	5		6.5	6	6	8	6		8.5	8		8.5	8				10.5	10						

TYPE	DATA		DESIGN		XA150							XA180							XA200	XA225				XA250	
	ITEM																								
	L min.	590	286	484	376	567	599	544	640	612	600	640	580	753	761	618	605	690	775	860	753	597	690	690	
	Lv	80	15	110	70	120	100	110	80	100	120	110	140	110			100	120	140	110	110	110	110	110	
	Tn (Nm)	4500	3300	5000	5200	6200	10000	10500	8400	10000	12000	13000	16000	19000	27000	16000	22000	16000	19000	27000	27000	27000	27000		
	Tf (Nm)	2250	1650	2500	2600	3100	5000	5250	4200	5000	6000	6500	8000	9500	13500	8000	11000	8000	9500	13500	13500	13500	13500		
	β (°)	35	28	30	25		35	25	25	35	30	25	25	30	25	30	25	25	25	25	25	25	25		
	D	142	136	125	138	141	158	160	154	158	170	172	178			204	187	204	178	178	204	204	204		
	Dr	DIN150							DIN180							DIN200	DIN225				DIN250				
	D1	130							155.5							170	196				218				
	D2	90H7							110H7							125H7	140H7				140H7				
	D3xδ min.	102x3	90x4	76.2x2.4	90x4	85x5	100x6	120x4	120x3	100x6		120x4	112x7	120x6	140x5	112x10	140x6.5	112x7	120x6	140x5	140x5	140x5	140x5		
	Lm	85	72	78	73	86	89.5	90	87	96	90	100	95	96	100	96	100	110	110	120	96	96	110	110	
	K	10							12							14	14	15	15	15	15	15	15	15	18
	t	3	3.3	3.1	3		3.3		4	3.3		3		3.4			2.9		4	5	5	5	5	6	
	n	8							8	8	10	8		8	10	8	10	8	8	8	12	8	12	8	8
	d	13	12					15	14	16	14		16			17	17	16	16	16	16	16	16	18	

Annotazioni:

- Le misure sono espresse in millimetri eccetto dove specificato.
- L= lunghezza standard, o lunghezza compressa in caso di modelli con allungamento.
Lv= allungamento, nei modelli dove è presente.
m= peso, riferito alle misure del catalogo.
mL= peso per 100mm di tubo.
Tn= coppia nominale.
Tf= coppia alla fatica, coppia di torsione permissibile determinata secondo la forza di affaticamento sotto carichi reversibili.
- Contattateci per eventuali personalizzazioni della lunghezza, dell'allungamento e delle flange.

Notations:

- Millimeters are used as measurement units except where noted.
- L= standard length, or shortest compressed possible length for designs with length compensation.
Lv= length compensation, in the models where it's present.
m= weight, reported to the measures of the catalogue.
mL= weight for 100m of tube.
Tn= nominal torque.
Tf= fatigue torque, i.e. the permissible torque as determined according to the fatigue strength under reversing loads.
- Please consult us for customizations regarding length, length compensation and flange connections.