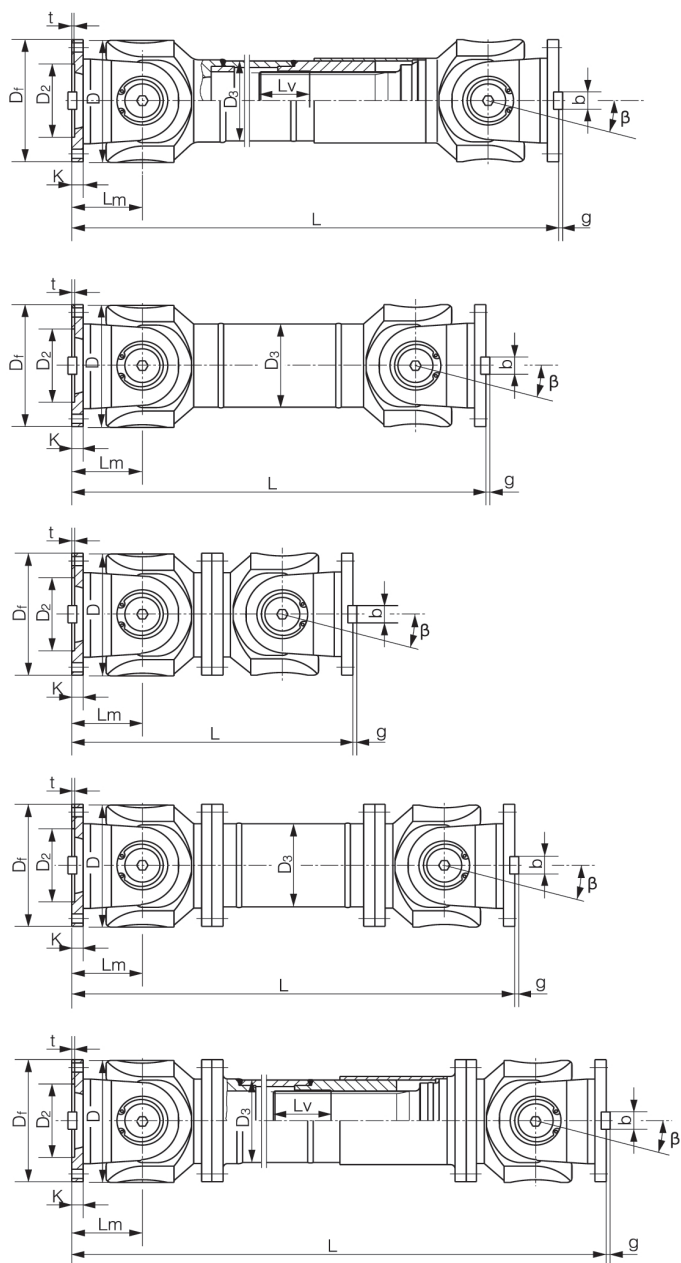






D E S I G N S





TIPO - TYPE:



A

-  TIPO SALDATO, CON ALLUNGAMENTO
-  WELDED SHAFT DESIGN, WITH LENGTH COMPENSATION



B

-  TIPO SALDATO, SENZA ALLUNGAMENTO
-  WELDED SHAFT DESIGN, WITHOUT LENGTH COMPENSATION



C

-  GIUNTO CARDANICO, SENZA ALLUNGAMENTO
-  SHORT FLANGED DESIGN, WITHOUT LENGTH COMPENSATION


D


-  TIPO FLANGIATO, SENZA ALLUNGAMENTO
-  LONG FLANGED DESIGN, WITHOUT LENGTH COMPENSATION

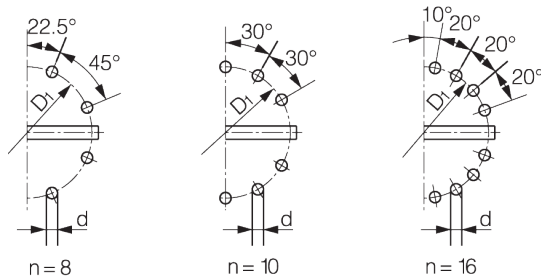
E

-  TIPO FLANGIATO, CON ALLUNGAMENTO
-  LONG FLANGED DESIGN, WITH LENGTH COMPENSATION

**CARATTERISTICHE FLANGE
FLANGE BOLTHOLE AND DESIGN PATTERNS**

 Sono disponibili anche flange con fori per spine di fissaggio a norme DIN15452.

 There are available also flanges with dowel pin connection according to norms DIN15452.



Flangia con connessione a centraggio

Flangia con chiave parziale
Flangia con chiave intera

Flangia con connessione a blocchi

Flangia con connessione a denti

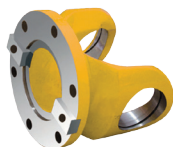
BHC



Bolt Hole Connection

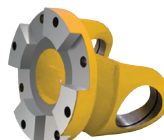
PKC

IKC



Partial face Key Connection
Integral face Key Connection

IPC



Integral face Pad Connection

HSC



Hirth Serration Connection

DATI E DIMENSIONI - DATA AND SIZES

TYPE	DESIGN		ITEM																					
	DATA	DESIGN	XB 160	XB 180	XB 200	XB 225	XB 250	XB 265	XB 285	XB 315	XB 350	XB 390	XB 440	XB 490	XB 550	XB 620								
A	L		740	800	900	1000	1060	1120	1270	1390	1520	1530	1690	1850	2060	2280								
	Lv		100		120	140					150	170	190		240	250								
	m (Kg)		65	83	115	152	219	260	311	432	610	804	1122	1468	2154	2830								
B	L		480	530	590	640	730	790	840	930	1000	1010	1130	1240	1400	1520								
	m (Kg)		44	60	85	110	160	180	226	320	440	590	820	1090	1560	2100								
C	L		380	420	440	500	560	600	640	720	780	860	1040	1080	1220	1360								
	m (Kg)		35	48	66	90	130	160	189	270	355	510	780	970	1330	1865								
D	L		520	580	620	690	760	810	860	970	1030	1120	1230	1360	1550	1720								
	m (Kg)		48	65	90	120	173	220	250	355	485	665	920	1240	1765	2390								
E	L		800	850	940	1050	1120	1180	1320	1440	1550	1710	1880	2050	2310	2540								
	Lv		100		120	140					150	170	190		240	250								
	m (Kg)		70	92	126	168	238	280	340	472	660	886	1230	1625	2368	3135								
β (°)		15																						
D		160	180	200	225	250	265	285	315	350	390	440	490	550	620									
Df		160	180	225	200	225	250	250	285	265	285	315	315	350	350	390	390	440	440	490	490	550	620	
D1		137	155	196	170	196	196	218	218	245	233	245	280	280	310	310	345	345	385	385	425	425	492	555
D2 (H9)		100	105	135	120	135	135	150	150	170	160	170	185	185	210	210	235	235	255	255	275	275	320	380
D3xø		114x10	127x10.5	146x11.5	159x10.5	180x12.5	194x13.5	203x14.5	219x16.5	245x19	273x21	325x25	351x30	402x32	426x40									
Lm		95	105	110	125	140	150	160	180	195	215	260	290	305	340									
K		16	17	20	18	20	20	25	25	27	25	27	32	32	35	35	40	40	42	42	47	47	50	55
t		4	5	5	5	5	5	6	6	7	5	7	8	8	8	8	8	8	8	10	12	12	12	12
n		8	8	8	8	8	8	8	8	8	8	10	10	10	10	10	10	16	16	16	16	16	16	16
d		15	17	17	17	17	17	19	21	19	21	23	23	23	23	25	25	28	28	31	31	31	31	38
b		20	24	32	28	32	32	40	40	40	40	40	40	50	50	70	70	80	80	90	90	100	100	100
g		6.0	7.0	9.0	8.0	9.0	9.0	12.5	12.5	15.0	12.5	15.0	15.0	15.0	16.0	16.0	18.0	18.0	20.0	20.0	22.5	22.5	22.5	25

VALORI DI COPPIA - TORQUE VALUES

	XB 160	XB 180	XB 200	XB 225	XB 250	XB 265	XB 285	XB 315	XB 350	XB 390	XB 440	XB 490	XB 550	XB 620
Tn (KNm)	21	28	40	56	80	100	120	160	225	320	500	700	1000	1250
Tf (KNm)	10.5	14	20	28	40	50	58	80	110	160	250	350	500	625
Tp (KNm)	15.2	20.3	29	40.6	58	72.5	87	116	159.5	232	362.5	507.5	725	906.2
Tcs (KNm)	28	36	52	73	104	130	156	208	292.5	416	650	910	1300	1625

Annotazioni:

- Le misure sono espresse in millimetri eccetto dove specificato.
- L= lunghezza standard, disponibili lunghezze compresse o maggiori secondo le specifiche del cliente.
Lv= allungamento standard, nei modelli dove è presente.
m= peso, riferito alle misure del catalogo.
mL= peso per 100mm di tubo.
Tn= coppia nominale.
Tf= coppia alla fatica, coppia di torsione permessa determinata secondo la forza di affaticamento sotto carichi reversibili.
Tp= coppia pulsante.
Tcs= coppia limite.
- Contattateci per eventuali personalizzazioni della lunghezza, dell'allungamento e delle flange.
- Tabella bulloni e coppie di serraggio:

Notations:

- Millimeters are used as measurement units except where noted.
- L= standard length, shortest or highest lengths available as customer specifications.
Lv= standard length compensation, in the models where it's present.
m= weight, reported to the measures of the catalogue.
mL= weight for 100m of tube.
Tn= nominal torque.
Tf= fatigue torque, i.e. the permissible torque as determined according to the fatigue strength under reversing loads.
Tp= pulsant torque.
Tcs= limit torque.
- Please consult us for customizations regarding length, length compensation and flange connections.
- Table of flange bolts and tightening torques:

Diametro flangia - Flange Diameter		160	180	200	225	250	265	285	315	350	390	440	490	550	620
Flange bolt	size	M14	M16			M18		M20	M22		M24	M27	M30		M36
	tightening torque (Nm)	180	270			372		526	710		906	1340	1820		3170

CODIFICA - ORDERING CODE

XB	225	A	2280 +	250	PKC	08
SERIES - SERIE	- FLANGE DIAMETER (mm)	TYPE - TIPO	- LENGTH	- LENGTH COMPENSATION (IF NECESSARY)	FLANGE CONNECTIONS - CONNESSIONE	- HOLES NUMBER
XB Medium duty Medio/pesante	- DIAMETRO FLANGIA (MM)	A Welded shaft design, with length compensation Tipo saldato, con allungamento	- LUNGHEZZA	- ALLUNGAMENTO (SE PRESENTE)	BHC Bolt hole connection ConneSSIONe a centraggio	- NUMERO FORI
		B Welded shaft design, without length compensation Tipo saldato, senza allungamento			PKC Connessione con chavetta parziale	
		C Short flanged design, without length compensation Giunto cardanico, senza allungamento			IKC Integral face key connection ConneSSIONe con chavetta intera	
		D Long flanged design, without length compensation Tipo flangiato, senza allungamento			IPC Integral face pad connection ConneSSIONe a blocchi	
		E Flanged shaft design, with length compensation Tipo flangiato, con allungamento			HSC Hirt serration connection ConneSSIONe a denti	